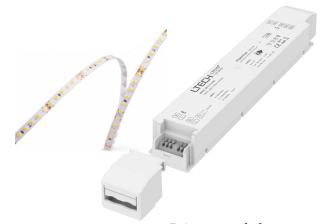


LED Intelligent Driver

- Dimming interface: DMX512/RDM, Push DIM.
- Supports RDM remote device management protocol.
- Dimming range from 0-100%, LED start at 0.1% possible.
- 0-100% flicker-free, achieve the level of exemption assessment.
- Over-heat / Over voltage / Over load / Short circuit protection, recover automatically.
- Standby Power Loss < 0.5W
- Full protective plastic housing.
- Compliant with Safety Extra Low Voltage standard.
- Suitable for indoor I / II/III type lamps application.



Flicker-free
Achieve the exemption level.



Dimmable:
0.1%-100%

SELV



RoHS



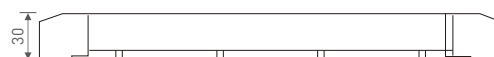
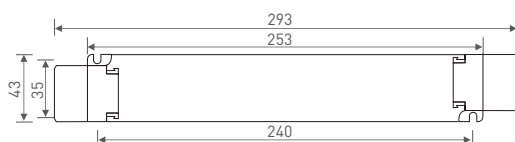
Specification

Model	LM-75-12-G1M2	LM-75-24-G1M2	LM-100-24-G1M2	
OUTPUT	Output Voltage	12Vdc	24Vdc	
	Output Voltage Range	12Vdc ±0.5Vdc	24Vdc ±0.5Vdc	
	Output Current	Max. 6.25A	Max. 3.12A	Max. 4.17A
	Output Power	Max. 75W		Max. 100W
	Output Power Range	0~75W		0~100W
	Strobe Level	High frequency exemption level.		
	Dimming Range	0~100%, dimming depth: Max. 0.1%		
	Overload Power Limitation	≥ 102%		
	Ripple & Noise	≤ 200mV	≤ 300mV	
PWM Frequency	≤ 3600Hz			
INPUT	Dimming Interface	DMX/RDM, Push DIM		
	Input Voltage	200-240Vac		
	Frequency	50/60Hz		
	Input Current	Max. 0.4A/230Vac	Max. 0.5A/230Vac	
	Power Factor	PF>0.97/230Vac, at full load		PF>0.98/230Vac, at full load
	THD	≤ 14% at 230Vac, at full load		≤ 12% at 230Vac, at full load
	Efficiency [typ.]	91%	92%	93%
	Standby Power Loss	<0.5W		
	Inrush Current[typ.]	Cold start 30A at 230Vac	Cold start 45.2A at 230Vac	
	Control surge capability	L-N:2KV		
Leakage Current	Max. 0.5mA			
ENVIRONMENT	Working Temperature	ta: -20°C ~ 50°C tc: 80°C		
	Working Humidity	20 ~ 95%RH, non-condensing		
	Storage Temp., Humidity	-40°C ~ 80°C, 10-95%RH		
	Temp. Coefficient	±0.03%/°C (0-50°C)		
	Vibration	10~500Hz, 2G 12min./1cycle, period for 72min. each along X, Y, Z axes.		
PROTECTION	Over-heat Protection	Intelligently adjusting or turning off the output current if the PCB temperature ≥110°C, auto recovers.		
	Over Voltage Protection	Shut down the output when non-load voltage ≥ 13V, re-power on to recover after fault condition is removed.	Shut down the output when non-load voltage ≥ 26V, re-power on to recover after fault condition is removed.	
	Over Load Protection	Shut down the output when current load ≥ 102%, auto recovers.		
	Short Circuit Protection	Shut down automatically if short circuit occurs, auto recovers.		
SAFETY & EMC	Withstand Voltage	I/P-O/P: 3750Vac		
	Isolation Resistance	I/P-O/P: 100MΩ/500VDC/25°C/70%RH		
	Safety Standards	IEC/EN61347-1, IEC/EN61347-2-13		
	EMC Emission	EN55015, EN61000-3-2 Class C, IEC61000-3-3		
	EMC Immunity	EN61000-4-2,3,4,5,6,8,11 EN61547		
Strobe Test Standard	IEEE 1789			
OTHERS	Dimension	293×43×30mm(L×W×H)		
	Packing	296×44×33mm(L×W×H)		
	Weight[G.W.]	300g±10g		

* The driver is suitable for connecting resistor current-limiting LED fixture (e.g. LED strip). The instantaneous surge current will be several times increased if connecting built-in constant current IC current-limiting LED fixtures, the driver will activate the overloaded protection (hiccups flickering). When you order, please remark controlling the constant current LED fixture (e.g. MR16 lamp, underground light, LED wall washer, constant current LED strip, etc.), then we can prepare the special programs.

Dimensions

Unit: mm

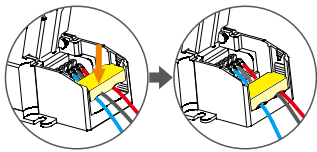


Wiring Diagram

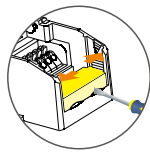


Application of Protective Cover

Wire pressing board:

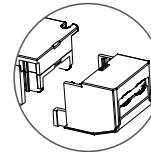
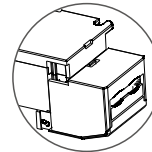
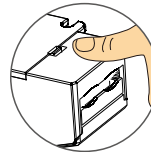


Push the wire pressing board to fix the wire.



Push outward the side plate, meanwhile use the tool to uninstall the wire pressing board.

Uninstall protective cover:



Break off the bottom left and right to remove the protective cover.

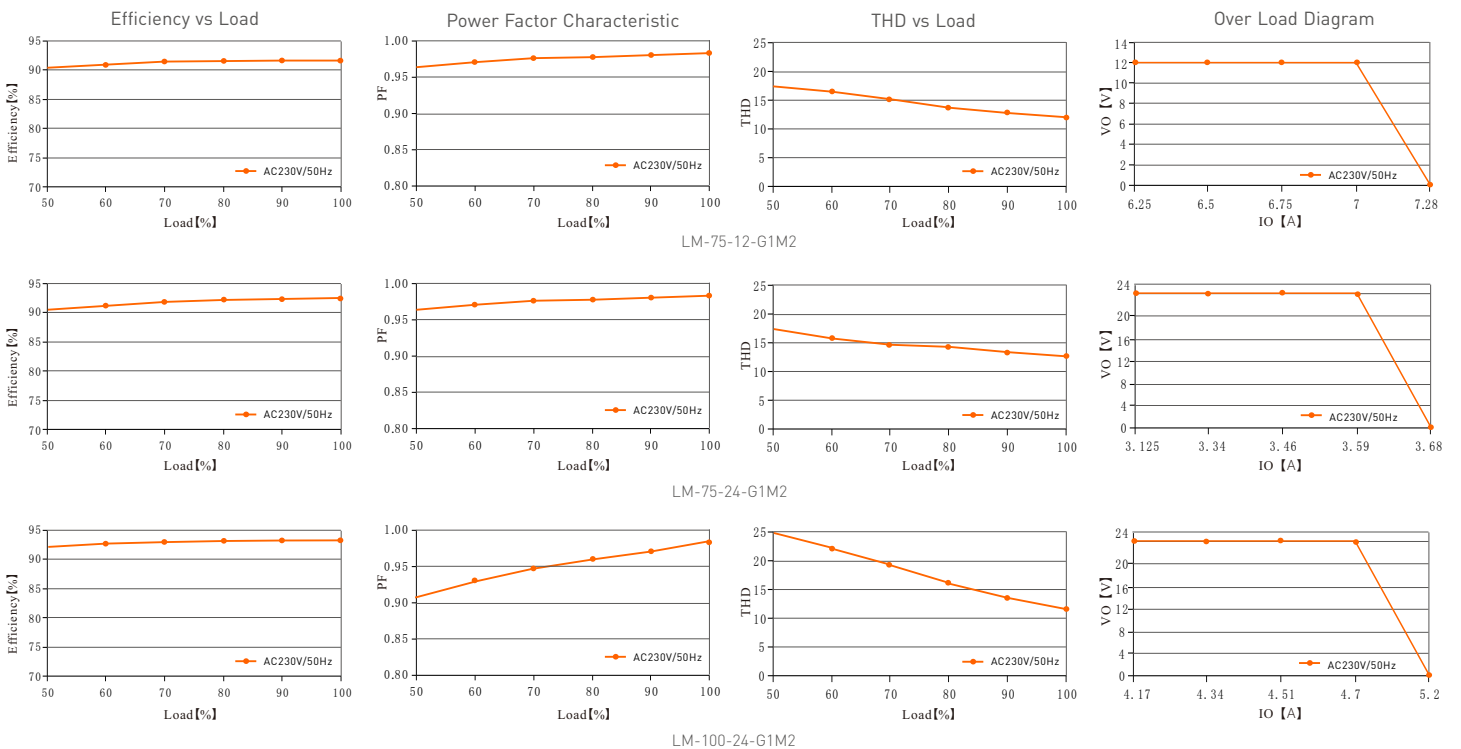
Push Dimming



Reset switch

- On/off control: Short press.
- Stepless dimming: Long press.
- With every other long press, the light level goes to the opposite direction.
- Dimming memory: Brightness will be the same as previously adjusted when turning off and on again.

Relationship Diagrams



LED 智能调光驱动器

- 调光接口：DMX512/RDM、Push DIM
- 支持RDM远程设备管理协议
- 调光范围：0~100%，调光深度：0.1%
- 0~100%全程无频闪，均达到豁免考核级别
- 过温、过压、过载、短路保护，可自动恢复
- 待机功耗 < 0.5W
- 全防护塑料外壳电源
- 符合SELV安全特低电压标准
- 适合室内 I、II、III类灯具应用



无频闪
高频豁免级别



Dimmable:
0.1%-100%

SELV



RoHS



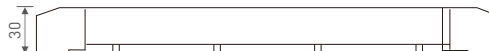
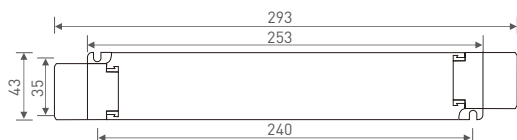
技术参数

型号	LM-75-12-G1M2	LM-75-24-G1M2	LM-100-24-G1M2	
输出	输出电压	12Vdc	24Vdc	
	输出电压范围	12Vdc ± 0.5Vdc	24Vdc ± 0.5Vdc	
	输出电流	Max. 6.25A	Max. 3.12A	Max. 4.17A
	输出功率	Max. 75W		Max. 100W
	输出功率范围	0~75W		0~100W
	频闪级别	高频豁免级别		
	调光范围	0~100%，调光深度: 0.1%		
	过功率限制	≥102%		
输入	纹波与噪声	≤200mV	≤300mV	
	PWM频率	≤3600Hz		
	调光接口	DMX/RDM, Push DIM		
	输入电压	200-240Vac		
	频率范围	50/60Hz		
	输入电流	Max. 0.4A/230Vac	Max. 0.5A/230Vac	
	功率因素	PF>0.97/230Vac (满载)	PF>0.98/230Vac (满载)	
	谐波THD	230Vac@THD≤14% (满载)	230Vac@THD≤12% (满载)	
	效率 (Typ.)	91%	92%	93%
	待机功耗	< 0.5W		
浪涌电流	冷启动30A/230Vac	冷启动45.2A/230Vac		
抗浪涌	L-N: 2KV			
漏电流	Max. 0.5mA			
环境	工作温度	ta: -20 ~ 50°C tc: 80°C		
	工作湿度	20 ~ 95%RH, 无冷凝		
	储存温度 湿度	-40 ~ 80°C, 10~95%RH		
	温度系数	±0.03%/°C(0-50°C)		
	耐震动	10-500HZ, 2G 12分钟/周期, X,Y,Z轴各72分钟。		
保护	过温保护	根据PCB温度超标情况(≥110°C), 智能调节电流输出或关闭, 可自动恢复。		
	过压保护	空载电压≥13V, 关闭输出, 异常排除后上电恢复	空载电压≥26V, 关闭输出, 异常排除后上电恢复	
	过载保护	负载电流≥102%, 关闭输出, 可自动恢复。		
	短路保护	输出线路短路自动关闭, 可自动恢复。		
安规和电磁规格	耐压	输入对输出: 3750Vac		
	绝缘阻抗	输入对输出: 100MΩ/500VDC/25°C/70%RH		
	安全规范	IEC/EN61347-1, IEC/EN61347-2-13		
	电磁兼容发射	EN55015, EN61000-3-2 Class C, IEC61000-3-3		
	电磁兼容抗扰度	EN61000-4-2,3,4,5,6,8,11, EN61547		
频闪测试标准	IEEE 1789			
其他	产品尺寸	293×43×30mm(L×W×H)		
	包装尺寸	296×44×33mm(L×W×H)		
	产品重量	300g±10g		

* 本款驱动器适合连接电阻限流的LED灯具（如LED灯条）。如果连接内置恒流IC限流的灯具，会产生几十倍的瞬间浪涌电流，导致驱动器会执行过载保护（打嗝频闪）。下单时这类内置恒流IC限流的灯具需要注明（如MR16灯杯、地埋灯、洗墙灯、恒流硬灯条等），以便烧写特殊程序。

尺寸图

单位：mm

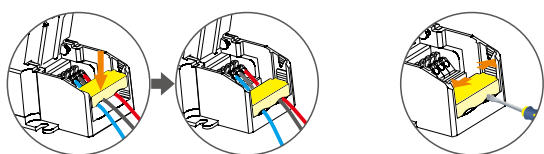


连接应用图



保护盖应用图

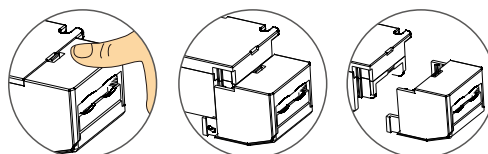
压线板



向下推压线板, 可固定住线。

向外推侧板的同时, 用工具撬即可拆下压线板。

保护盖的拆装



在底部左右掰动, 即可将保护盖拆下。

Push Dimming



复位开关

- 开关控制: 短按。
- 无级调光: 长按。
- 每隔一次长按, 明暗度会向相反方向调整。
- 调光记忆: 当再次开关时, 灯光会回到先前调整的亮度水平。

关系图表

